



## TECHNICAL DATA

### E1 Tributaries

2048 kbit/s according to ITU-T G.703, G.704 and G.706

### E1 Service alarms

according to E/M signalization standard

### External clock reference

2048 kHz according to ITU-T G.703/10

### TMN interface

SUNCE-M (proprietary)

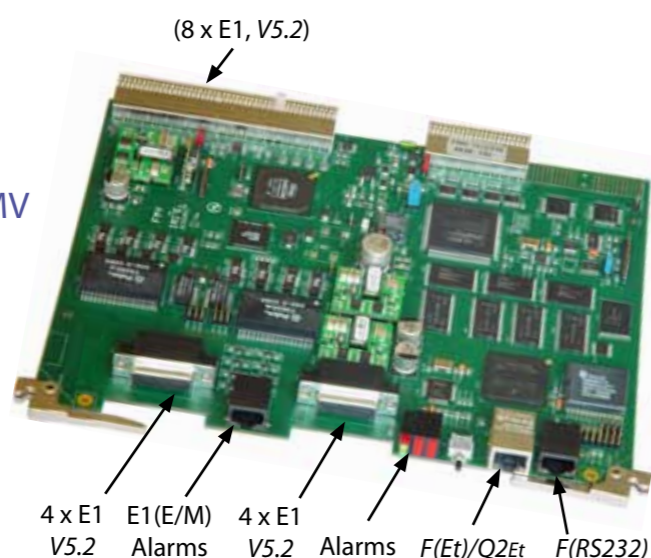
SNMP/V1/V2/V3

### Operating temperature range

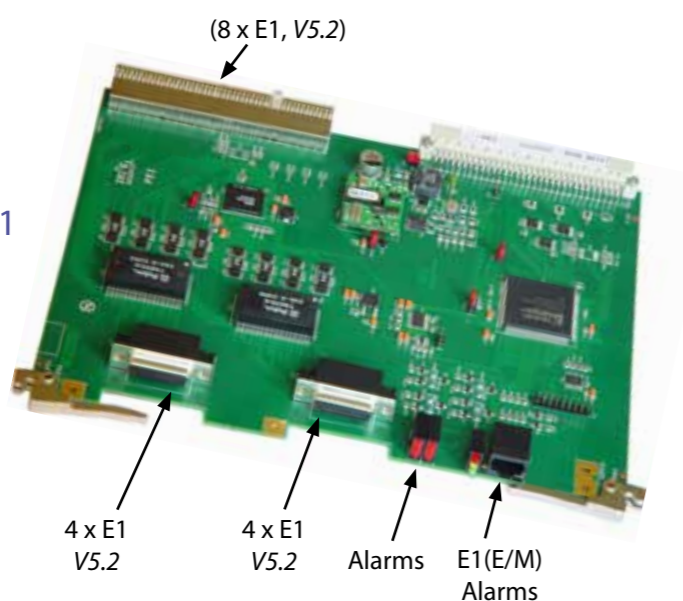
F (RS232/V.24 or 10/100 BaseTX Ethernet),  
Q2 (RS485), Q2Et (10/100 bT)  
RFC 3895 (DS1/E1)

-5°C up to +45°C  
(class 3.2)

FMV



PE1



**IRITEL**  
BEOGRAD

### IRITEL AD BEOGRAD

Batajnički put 23, 11080 Beograd, Serbia  
General Manager: (+381 11) 3073 515, Sales: (+381 11) 3073 555  
Marketing: (+381 11) 3073 544, Exchange: (+381 11) 3073 400, Fax: (+381 11) 3073 434  
<http://www.iritel.com>, e-mail: [info@iritel.com](mailto:info@iritel.com)

5/2010

## Access Systems

# V5CAS PROTOCOL CONVERTOR

- 1 to 8 E1 links (V5)
- Up to 24 E1 links (CAS)
- Digital channel cross-connect (non blocking)
- Remote multiplexers (CAS) connectivity to V5 interface (up to 660 subscribers)
- Concentrator according to V5.2 up to 2400 subscribers, for remote multiplexers and/or V5.2 access nodes
- Factory customerable CAS interface for non IRITEL multiplexers



TELECOMMUNICATIONS AND ELECTRONICS  
<http://www.iritel.com> e-mail: [info@iritel.com](mailto:info@iritel.com)

### Applications

V5CAS Protocol convertor provide connection of access multiplexers FM-MSAN and FM2x2 with CAS signalling to telephone exchange with V5 protocol (V5.1/V5.2).

V5CAS enable economic solution to use telephone exchange's V5.2 interfaces for connection access multiplexer with small number of subscribers (60 to 120).

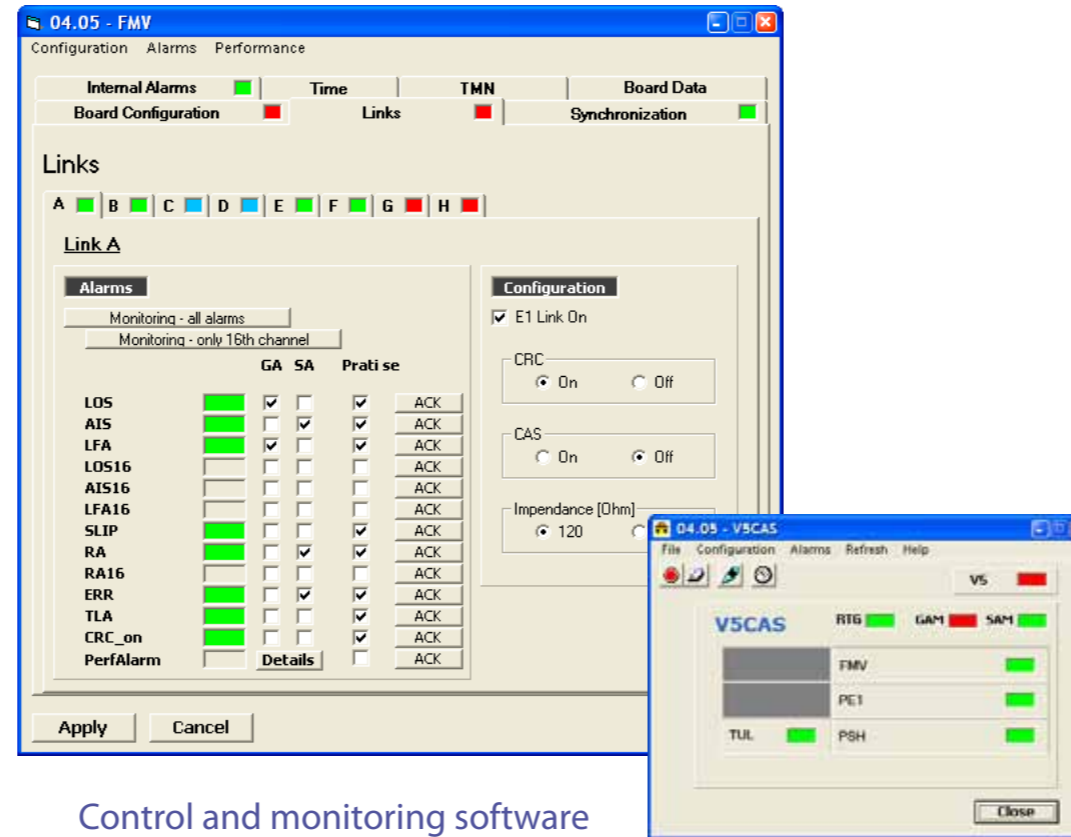
V5CAS enable digital channel cross-connect (64 kbit/s) between all 24 E1 links.

### Basic functions

- Connections of remote access nodes: FM2x2 (multiplexer), FM-MSAN (concentrator) to exchange V5.2 interface
- Digital channel cross-connect including corresponding signaling bits between all 24 links (2 Mbit/s) (non blocking)
- Control channel (20 kbit/s or 64 kbit/s) transmission via V5.2 interface

### Configurations

- FMV- multiplex, cross-connect, control and power supply unit with V5.2 interface
- PE1 – 8xE1 interfaces unit
- PSH – 4 x SHDSL interface unit



Control and monitoring software

### Control and monitoring

Integrated network management system SUNCE-M provides continuous management of V5CAS and all other IRITEL's SDH and PDH equipment (FM-MSAN, FM2x2, ODS155, OTS622 ...).

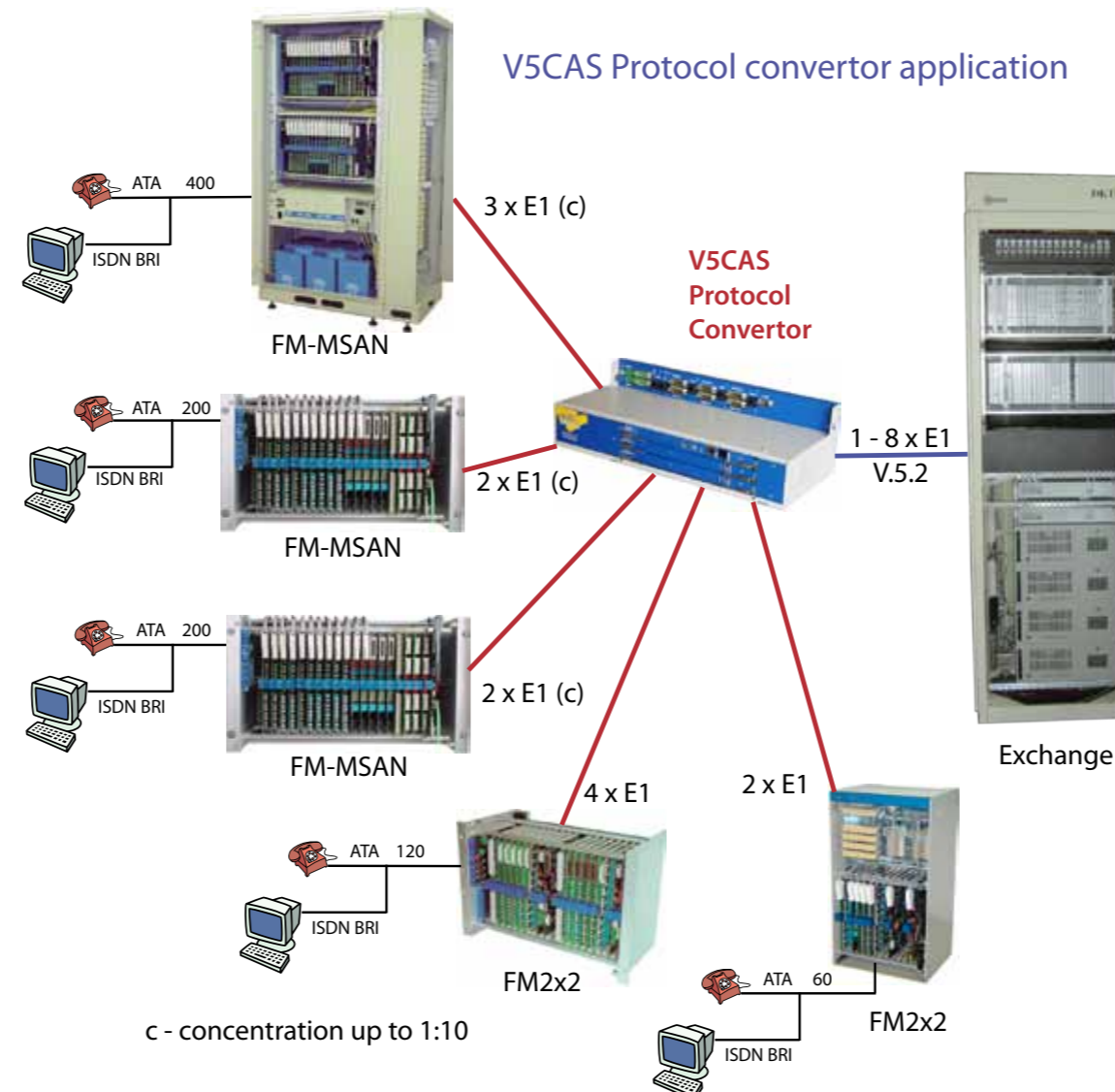
For NMS system integration we support standard interface based on SNMP protocol.

### Synhronization

- From internal built-in oscillator ( $\pm 25$  ppm)
- From external 2 048 kHz clock
- From received clock on any external link

### Mechanical design

- Unit (233x175x20 mm and 233x100x20mm)
- V5CAS module (120x437x205 mm)
- 19"/ETSI cabinet (2200x600x300 mm)



V5CAS Protocol convertor application